




Légende


 OAP modifiée

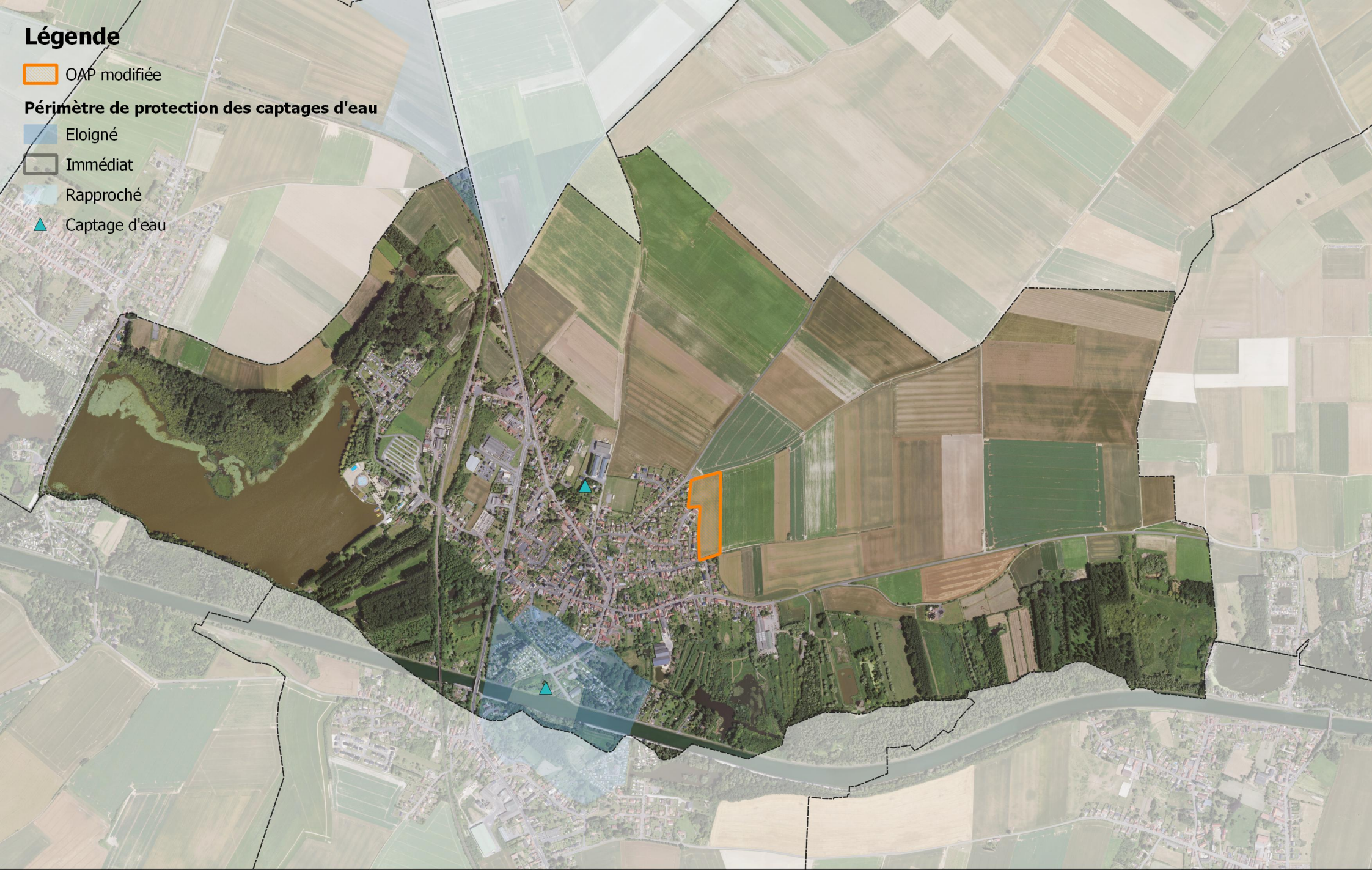
Périmètre de protection des captages d'eau

 Eloigné

 Immédiat

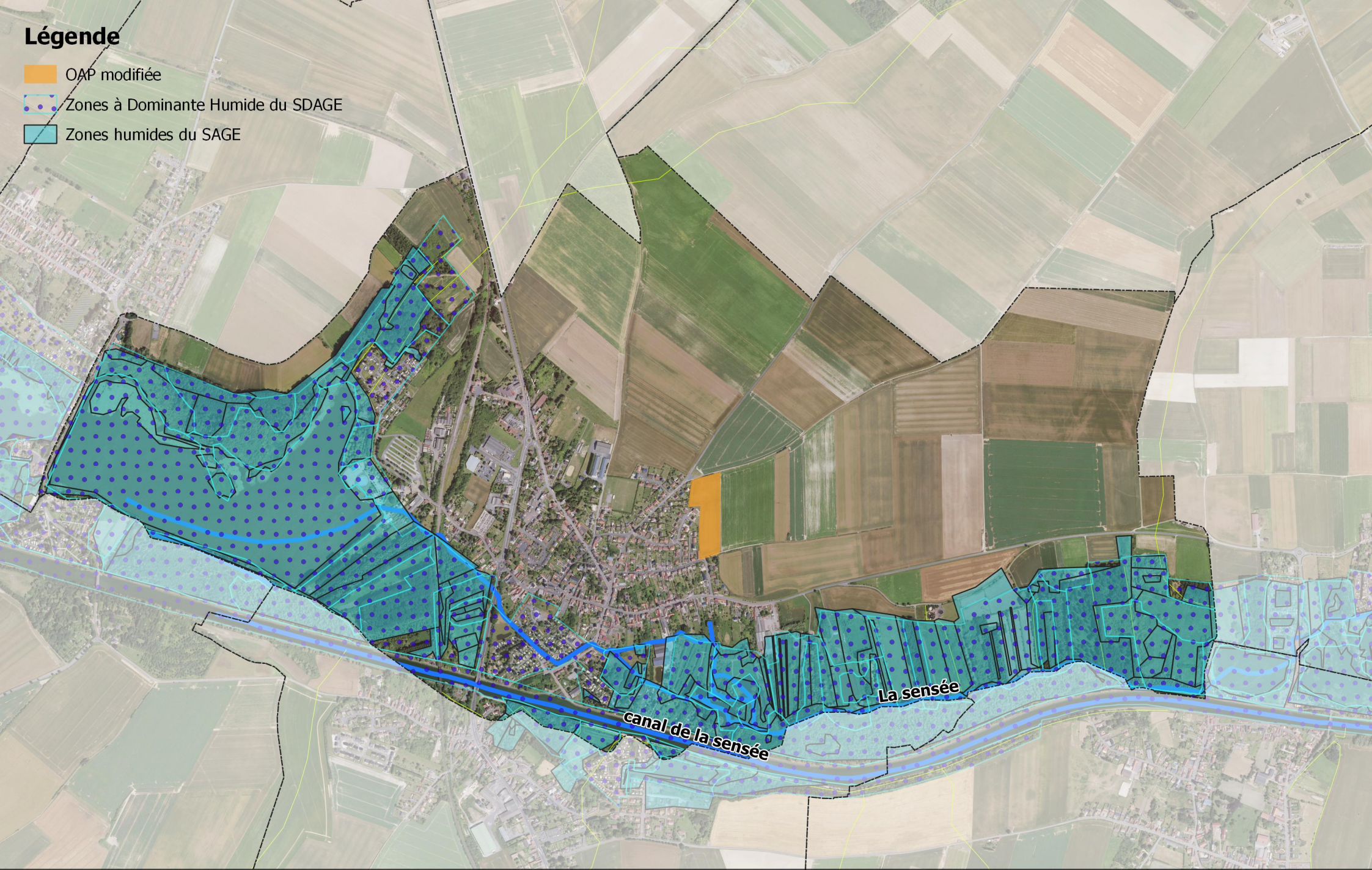
 Rapproché

 Captage d'eau






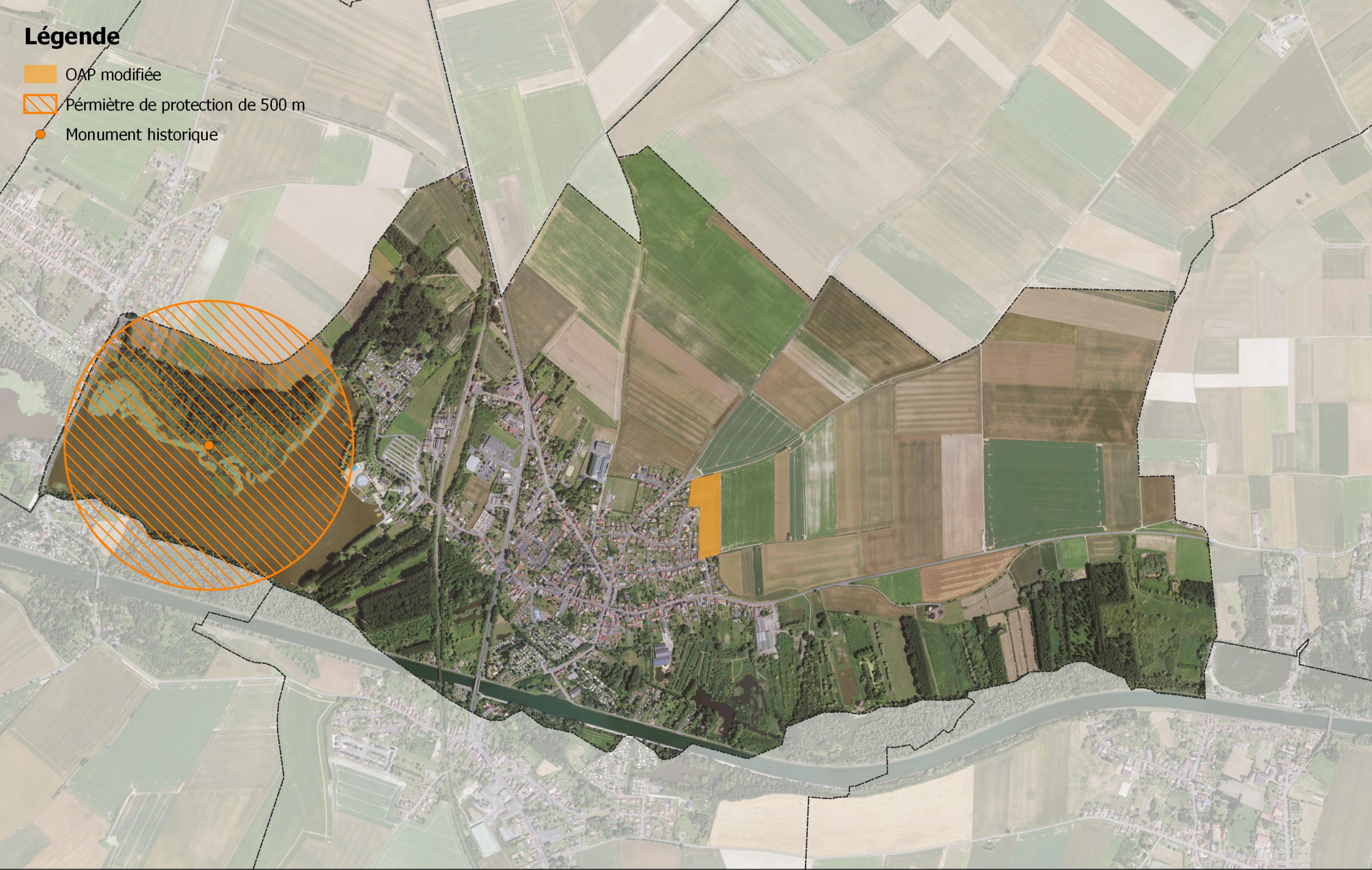
Légende

-  OAP modifiée
-  Zones à Dominante Humide du SDAGE
-  Zones humides du SAGE



Légende

-  OAP modifiée
-  Périmètre de protection de 500 m
-  Monument historique



Légende

- OAP modifiée
- Réservoirs biologiques**
 - Zones humides
- Espaces à renaturer**
 - Bandes boisées
- Corridors biologiques**
 - Rivières
 - Zones humides

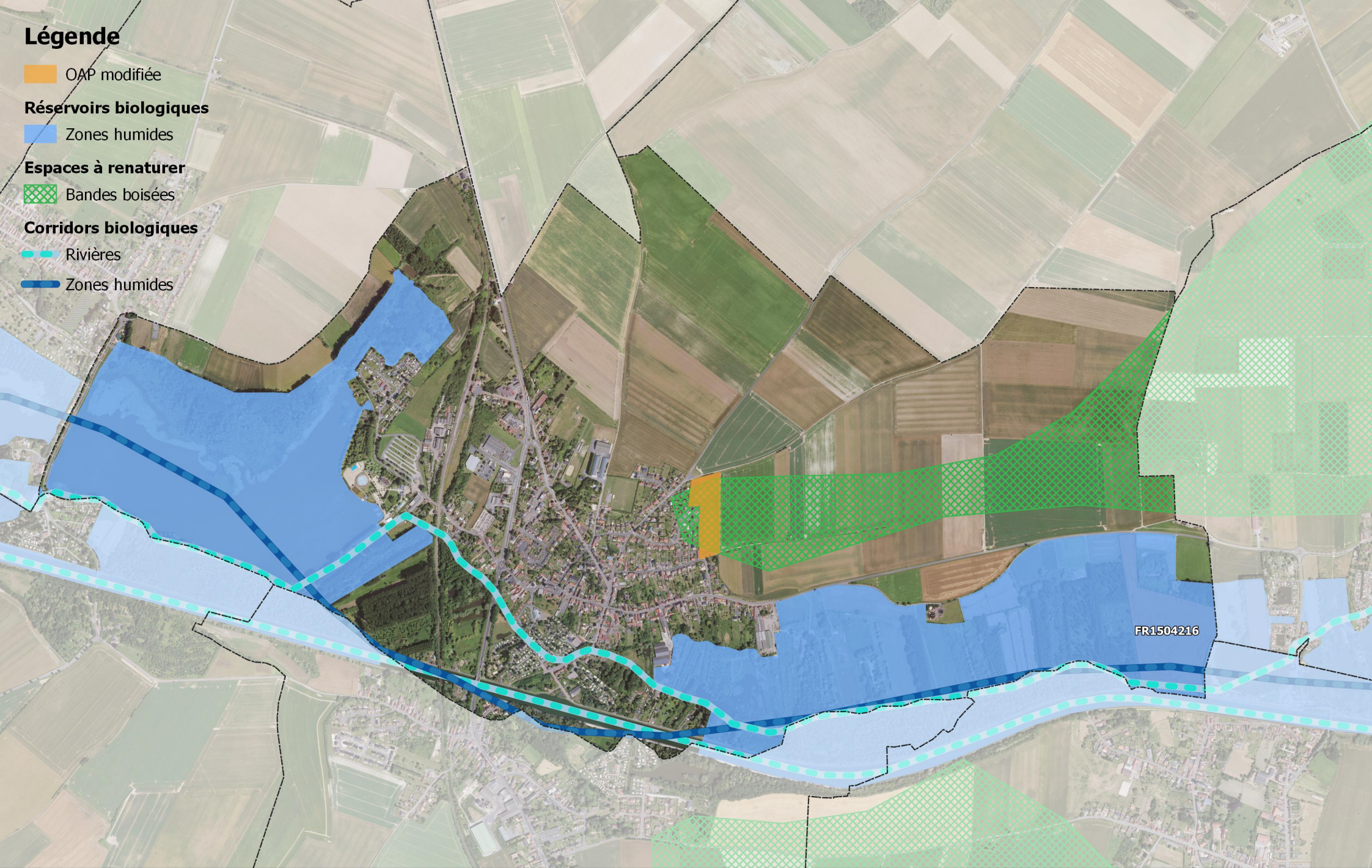





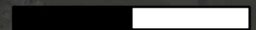
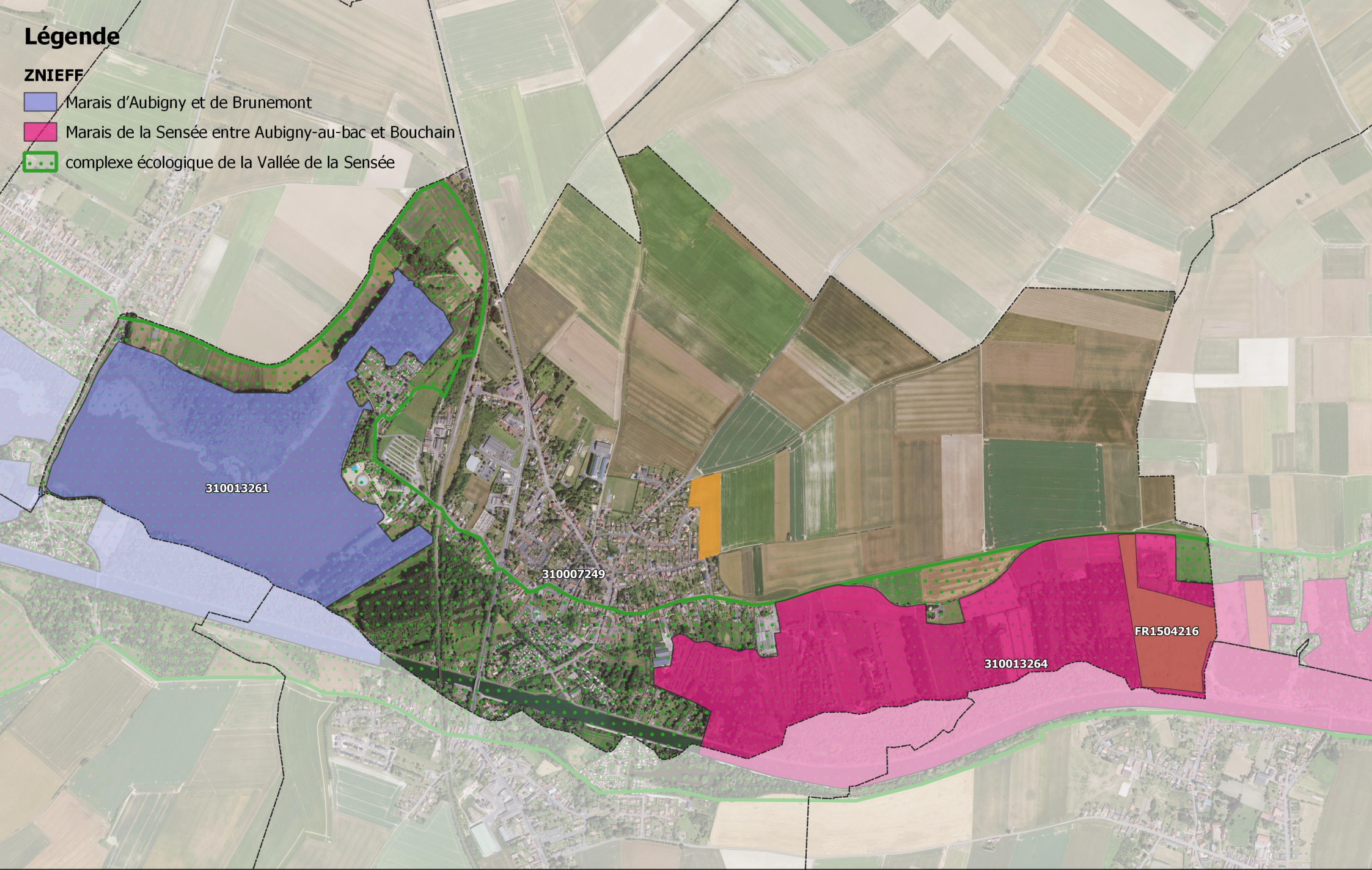
Schéma régional de Cohérence Ecologique



Légende

ZNIEFF

-  Marais d'Aubigny et de Brunemont
-  Marais de la Sensée entre Aubigny-au-bac et Bouchain
-  complexe écologique de la Vallée de la Sensée



Légende

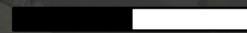
OAP modifiée

Niveau d'aléa

Faible

Moyen

Fort

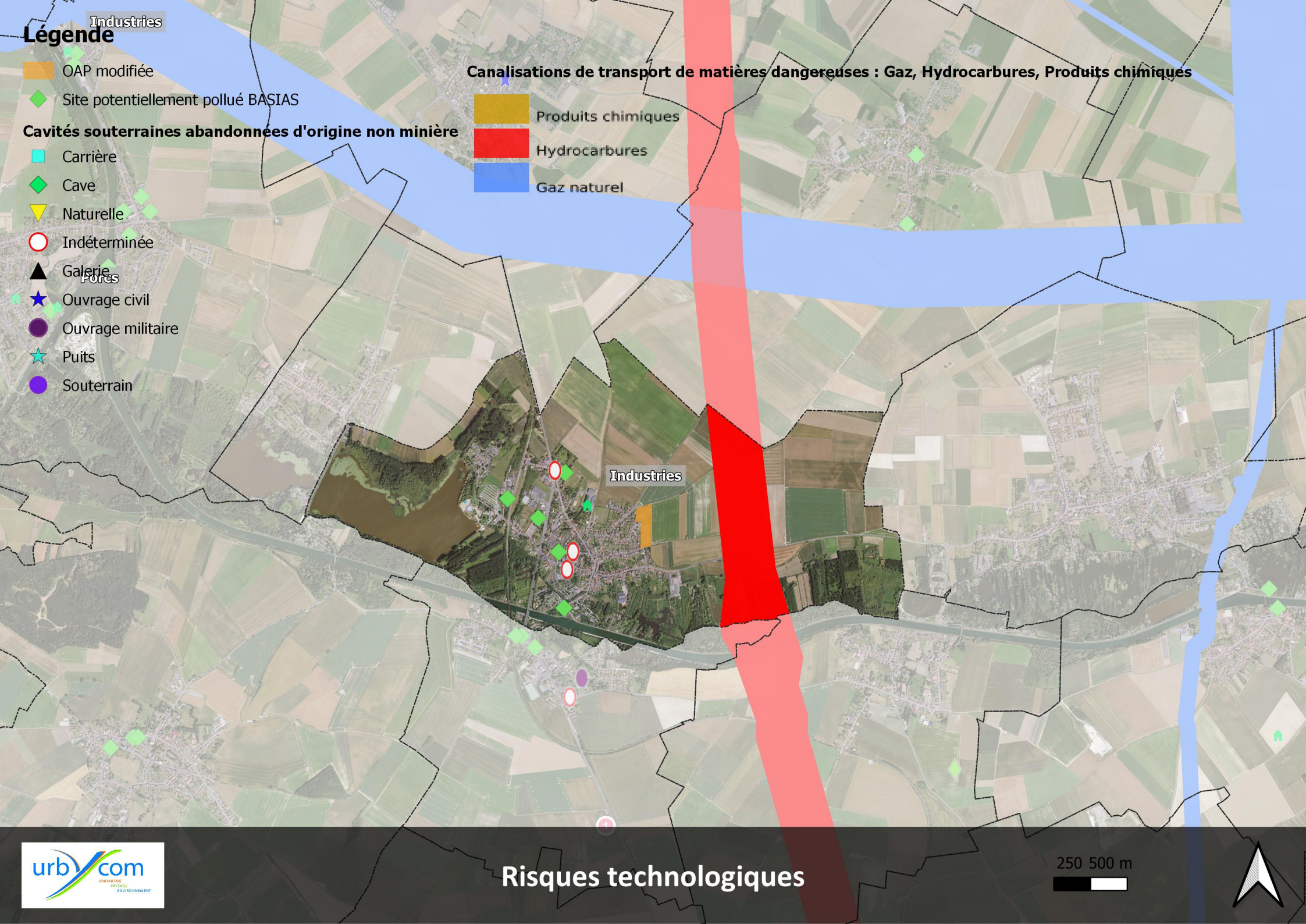


Légende


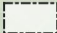
- OAP modifiée
- Site potentiellement pollué BASIAS
- Cavités souterraines abandonnées d'origine non minière**
 - Carrière
 - Cave
 - Naturelle
 - Indéterminée
 - Galerie
- Puits**
 - Ouvrage civil
 - Ouvrage militaire
 - Puits
 - Souterrain

Canalisations de transport de matières dangereuses : Gaz, Hydrocarbures, Produits chimiques




- Produits chimiques
- Hydrocarbures
- Gaz naturel



Légende

-  OAP modifiée
-  Aubigny-au-Bac

Remontées des nappes

-  Pas de débordement de nappe ni d'inondation de cave
-  Zones potentiellement sujettes aux débordements de nappe
-  Zones potentiellement sujettes aux inondations de cave

